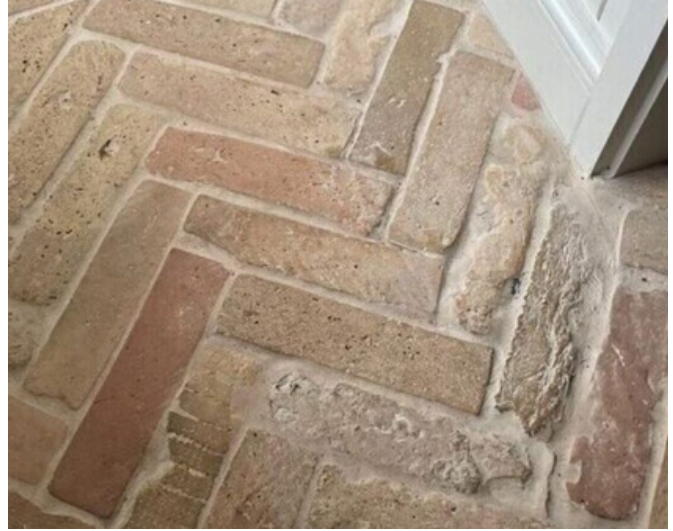


# TOWN & COUNTRY BRICKS



## A SALVAGED VENEER BRICK COLLECTION



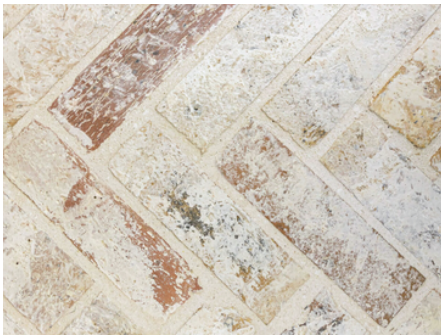
# TOWN & COUNTRY BRICKS



## DOWNTOWN COLLECTION

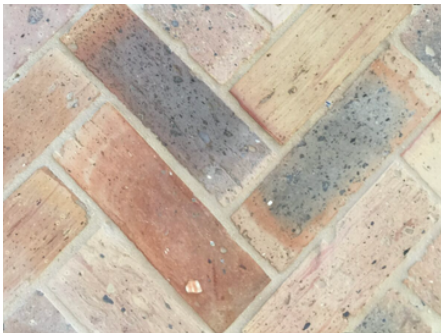
The Original Selection

Also available in WHOLE BRICK PIECES (see next page)



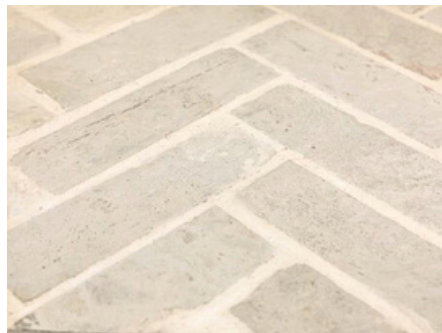
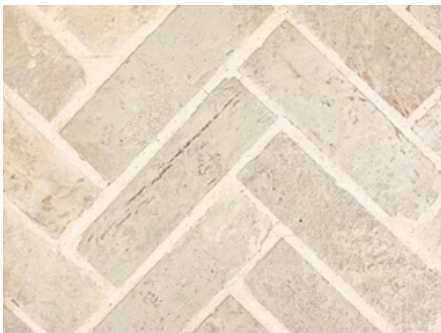
## MANOR COLLECTION

The Whitewashed Finish



## COTTAGE COLLECTION

The Salvaged Look



## BUNGALOW COLLECTION

The Beach Look



# TOWN & COUNTRY BRICKS

## DOWNTOWN COLLECTION – THE OUTDOORS

### WHOLE BRICKS





# TOWN & COUNTRY BRICKS

ALL MATERIALS ARE ARTISAN, HANDMADE, SALVAGED, AND RECLAIMED, THEREFORE PRESENTING DIFFERENT CHARACTERISTICS THAN INDUSTRIALLY PRODUCED PAVERS AND BRICKS. ALL SIZES AND SHAPES ARE APPROXIMATE AND NOMINAL. NO TWO PIECES ARE ALIKE IN MEASURE, SIZE, OR APPEARANCE. PLEASE WORK WITH GROUT JOINTS AT LEAST 1/4" WIDE, as presented in our display boards and images.

Our showroom display boards, loose samples, and images are only indicative of the color range and for representation purposes only. Due to the nature of the recycled and artisan production, selections vary within the same box, bundle, pallet, current lot, and shipment to shipment. Blending of pavers/bricks from different boxes/bundles is highly recommended. Please ask for images of current lot and actual samples

THE PRODUCT IS SOLD AS IS.

## PRODUCT INSTALLATION INSTRUCTIONS AND RECOMMENDATIONS:

Complete guidelines can be found in the Town & Country tab of our website- [www.ceramicaetc.com](http://www.ceramicaetc.com)  
Please SEAL THE PRODUCT WITH A PENETRATING WATER BASED SEALER BEFORE AND AFTER GROUTING AND FOLLOW INSTALLATION INSTRUCTIONS. Please WORK WITH A 20% WASTE FACTOR.

## APPLICATION:

Our thin pavers and bricks can be installed indoor and outdoor. However we do not recommend horizontal outdoor paving or installations in areas that can be subject to freezing temperatures.

We also recommend a UV Penetrating sealer for all outdoor installations.

